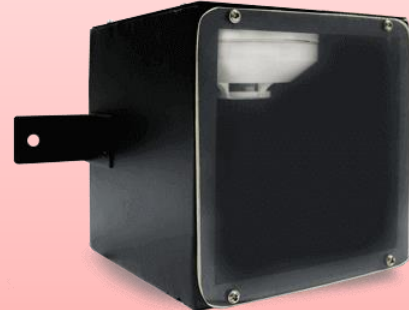


Addressable Intelligent Duct Smoke Detector

Model – **AU101DSD**



Features:

- ✓ Soft addressing
- ✓ Corrosion protection
- ✓ Real time smoke info
- ✓ Contamination alarm
- ✓ Insect-resistant screening
- ✓ Remote test facility from panel
- ✓ Remote sensitivity alteration from panel
- ✓ Easy to maintain/service
- ✓ Electrical supervision
- ✓ Transient voltage protection upto 2.4KV

Complied with:

UL 268-6th Edition

EN 54-Part 7

IS 11360

Overview:

This Addressable Intelligent Duct Smoke Detector houses smoke sensor for monitoring the level of smoke in the airstream of duct work sections of the HVAC system. This device intended to be used for addressable automatic fire detection system to detect presence of smoke for fire warning.

This device measures the smoke level in protected areas and analyses the level of smoke and verify with alarm level setting. When smoke level crosses the set level, it communicates to fire warning system control panel along with its ID.

Alarm activated sensor, continuously interacts with control panel to update the real time smoke level exists at reported location. If smoke level rises, action can be taken accordingly. Similarly if it gets reduced, action can be taken for normalcy by rescue staff.

The Smoke sensor works on photoelectric principle. Main sensor component is special LED to illuminate the smoke chamber. This LED illumination level gets reduced due to its aging.

Hence its sensitivity goes out of sensitivity range. Therefore it requires a periodical calibration to ensure its functional objective. Refer IS 2189 for more details.

Mechanical specifications

Dimensions(LxBxD)		Weight	
LxBxD	155x150x150 mm	Without detector	1710g
Sampling Tube	205mm		
Exhausted Tube	220mm	With detector	1820g

Specifications

Electrical specification

Operating voltage	17-24V DC
Quiescent current	200 μ A
Alarm current	1mA

Indications

Normal	Green LED (Blinks during scan)
Alarm	Red LED (steady glow)

General specifications

Operating temperature	0°C to 49°C
Storage temperature	5°C to 40°C
Humidity	0-95% RH(Non-condensing)
Colour	White
Compatibility	AU101X Protocol
Smoke sensitivity	0.5 - 3.5 %obs/foot
Detector Contact Clamp	Stainless steel
Housing Material	16 Gauge Cold Rolled sheet
Detector Housing	Polycarbonate
Back box	Black Matte
Front cover	Acrylic sheet