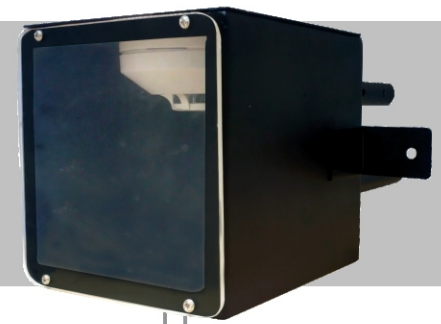


# Conventional Optical Duct Smoke Detector

Model No - AC103DSD



- Wide operating voltage
- Low standby current
- Drift compensation technique for false alarm immunity
- Insect-resistant screening
- Easy to maintain/service
- Dual bi-color LED indication for 360° viewing angle

## Overview:

This Conventional Duct Smoke Detector houses smoke sensor for monitoring the level of smoke in its surveillance. It switch to alarm state, when the level of smoke in the airstream of duct work sections of the HVAC air handling system.

## Specification

### Electrical Specifications

<b>Operating voltage</b>	Nominal 12/24V DC Minimum 9V DC Maximum 26V DC
<b>Quiescent current</b>	50μ A
<b>Alarm current</b>	25 mA at 24V 12 mA at 12V

### Indications

<b>Normal</b>	Green LED (Blinks every 8 sec)
<b>Alarm</b>	Red LED (Glows Steady)

### General Specifications

<b>Smoke sensitivity</b>	1+/- 0.5 %obs/ft
<b>Operating temperature</b>	0°C to 49°C
<b>Storage temperature</b>	5°C to 40°C
<b>Humidity</b>	0-95% RH (Non-condensing)
<b>Color</b>	White
<b>Cycle Time</b>	4 sec
<b>Contact Clamp</b>	Stainless steel
<b>Detector Contact Clamp</b>	Stainless steel
<b>Housing Material</b>	16 Gauge Cold Rolled sheet
<b>Detector Housing</b>	Polycarbonate
<b>Back Box</b>	Black Matte
<b>Front Cover</b>	Acrylic sheet

### Mechanical Specifications

<b>Dimensions(LxBxD)</b>	155x150x150mm	
<b>Sampling Tube</b>	205mm	
<b>Exhausted Tube</b>	220mm	
<b>Weight</b>	<b>Without Base</b>	<b>With Base</b>
	1710g	1820g

