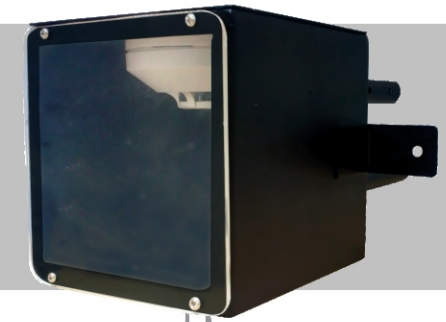


# Addressable Intelligent Duct Smoke Detector

Model No - AU101DSD



## Overview:

This Addressable Intelligent Duct Smoke detector is a networkable instrument that houses smoke sensor for monitoring the level of smoke in the airstream of duct work sections of the HVAC air handling system. Its unique feature is to provide the live smoke level to the control panel for real time monitoring purpose.

## Specification

### Electrical Specifications

<b>Operating voltage</b>	17-27V DC
<b>Quiescent current</b>	200uA
<b>Alarm current</b>	1mA

### Indications

<b>Normal</b>	Green LED (Blinks during scan)
<b>Alarm</b>	Red LED (Glows steady)

### Complied with:

**UL** 268-6th Edition  
**EN** 54-Part 7  
**IS** 11360

### General Specifications

<b>Smoke sensitivity</b>	0.5 - 3.5 %obs/foot
<b>Operating temperature</b>	0°C to 49°C
<b>Storage temperature</b>	5°C to 40°C
<b>Humidity</b>	0-95% RH (Non-condensing)
<b>Color</b>	White
<b>Compatibility</b>	AU101X Protocol
<b>Detector Contact Clamp</b>	Stainless steel
<b>Housing Material</b>	16 Gauge Cold Rolled sheet
<b>Detector Housing</b>	Polycarbonate
<b>Back Box</b>	Black Matte
<b>Front Cover</b>	Acrylic sheet

- Soft addressing
- Contamination alarm
- Real time smoke info
- Remote test facility from the panel
- Remote sensitivity alteration from the panel
- Electrical supervision
- Insect-resistant screening
- Address can be changed from the panel
- Easy to maintain/service
- Dual bi-color LED indication for 360° viewing angle
- Transient voltage protection upto 2.4KV
- Corrosion protection

### Mechanical Specifications

<b>Dimensions(LxBxD)</b>	155x150x150mm
<b>Sampling Tube</b>	205mm
<b>Exhausted Tube</b>	220mm
<b>Weight</b>	
<b>Without Detector</b>	1710g
<b>With Detector</b>	1820g

